



Majlis Ugama Islam Singapura
(Islamic Religious Council of Singapore)

Fulfilling our Roles as Stewards

Muis Sustainability Report 2023

CONTENTS

Foreword

- 01 Chief Executive's Message
- 02 Governance Structure

Environmental Indicators & Targets

- 03 Electricity Consumption
- 04 Greenhouse Gas Emission
- 05 Water Consumption
- 06 Waste Generation

Sustainability Efforts Within Muis

- 07 Policies & Practices
- 08 Building a Sustainable Culture
- 09 Infrastructure Works

FOREWARD



Mr Kadir Maideen
Chief Executive, Muis

Chief Executive's Message

Environmental Concerns

The Third National Climate Change Study, which was completed in 2023, projects higher temperatures, more wet and dry extremes, and accelerating increase in mean sea levels for Singapore and Southeast Asia by the end of the century.

The projections in the study are based on three global greenhouse gas (GHG) emissions scenarios (Low, Medium, High). The choices we make today in reducing GHG emission will determine which scenario will occur.

Similarly, as our population and economy continue to grow, we need to conserve our precious water resources and reduce our waste production. Singapore's only landfill, Semakau, is expected to reach full capacity by 2035.

How Climate Change Poses Risks to Muis

Some of our community's institutions; mosques and madrasahs are located at low-lying areas of Singapore. Hence, they are vulnerable to flooding resulting from frequent heavy rainfall events and rises in mean sea level. Singapore's Muslim community would be affected should these institutions be affected.

Muis officers, and the greater Muslim community as a whole, would be affected especially by those involved in outdoor-related activities as we face higher risks of dehydration and heat stress that are a result of higher temperatures.



Mr Kadir Maideen
Chief Executive, Muis

Chief Executive's Message

Opportunities in Addressing Climate Change

Addressing climate change can also bring some opportunities for Muis in terms of building a sustainability culture among Muis officers and incorporating sustainability features for infrastructure works and procurement.

Muis' Contribution to Environmental Sustainability

The digitalisation of Muis' key services has played a part in reducing GHG emission. Members of the public need not commute to Muis' offices, mosques and madrasahs for registration or transactional matters. This effort has also led to a reduction of many paper processes, reducing our carbon footprint.

Muis also implemented policies, practices and initiatives aimed at reducing consumption of electricity and water as well as promoting recycling. There were also Friday sermons written by Muis that promote environmental practices.

This World is Our Responsibility

One of our Friday sermons, titled "This World is Our Responsibility from Allah" calls upon Muslims in Singapore to strive to create an environment that is better and more prosperous for future generations. This will enable them to live as thankful servants of Allah (s.w.t.) and as successors, with the hope that it will grant them well-being in this world and the hereafter.

May Allah (s.w.t.) bless all our efforts while also instilling a sense of environmental responsibility in us.

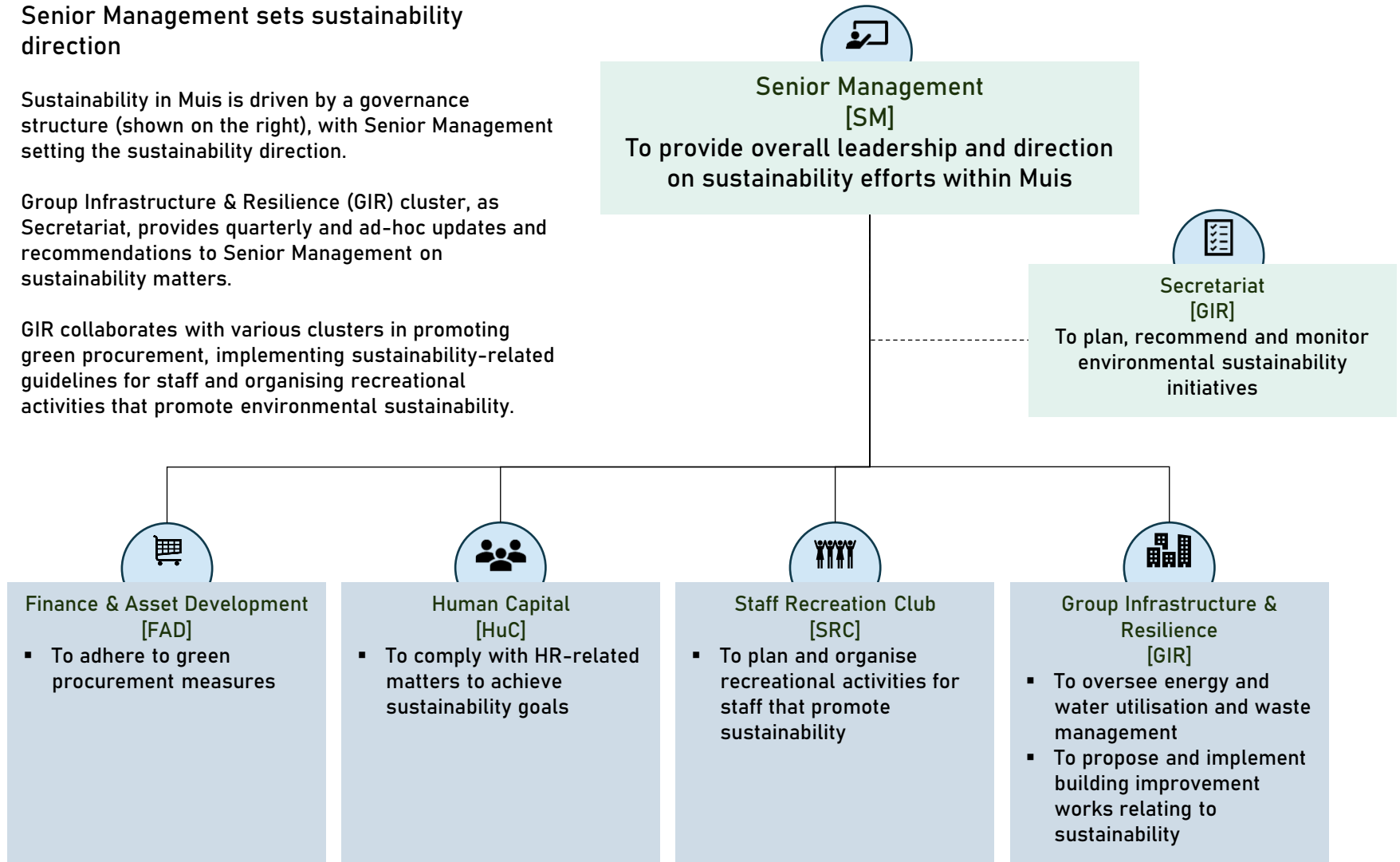
Governance Structure

Senior Management sets sustainability direction

Sustainability in Muis is driven by a governance structure (shown on the right), with Senior Management setting the sustainability direction.

Group Infrastructure & Resilience (GIR) cluster, as Secretariat, provides quarterly and ad-hoc updates and recommendations to Senior Management on sustainability matters.

GIR collaborates with various clusters in promoting green procurement, implementing sustainability-related guidelines for staff and organising recreational activities that promote environmental sustainability.



ENVIRONMENTAL INDICATORS & TARGETS

Environmental Indicators & Targets

Scope of Sustainability Disclosure

This inaugural Muis Sustainability Report is for Financial Year (“FY”) 2023, which runs from 1 January 2023 to 31 December 2023. It provides an account of Muis HQ’s environmental performance and targets as well as sustainability-related initiatives carried out by Muis.

Environmental Indicators Adopted

Muis adopts the following environmental indicators:

- Electricity consumption
- Greenhouse gas (GHG) emission
- Water consumption
- Waste generation

Environmental Indicators & Targets

Data Collation

Electricity and water consumption data shown in this report are derived from the monthly utility bills provided by SP Services Ltd. The amount of waste generated monthly are provided by the refuse removal vendor for Singapore Islamic Hub, 800 Super Waste Management Pte Ltd. GHG emission data are derived by multiplying the electricity consumed by the grid emission factor which can be found on Energy Market Authority's website.

Baseline

Due to the COVID-19 pandemic, there were reduced economic and social activities in 2020, 2021 and 2022. Hence, the environmental performance during the pandemic is not considered representative of Muis' business-as-usual operations. In addition, waste disposal data are only available from 2022 onwards. As such, the following baseline levels are established for the respective environmental indicators:

Environmental Indicator	Baseline
Electricity consumption	Average of 2018-2020 levels
GHG emission	No baseline
Water consumption	Average of 2018-2020 levels
Waste generation	2022

Environmental Indicators

Summary of Environmental Performance

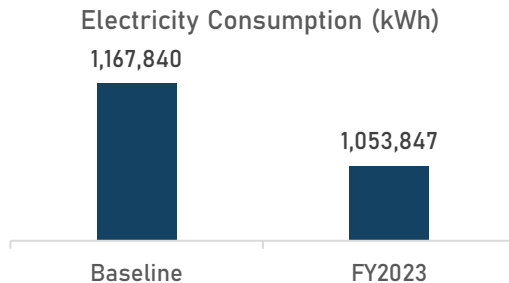
The environmental performance for Muis HQ for FY2023 as compared to the respective baseline levels are summarised in the table below:

Performance Metric	Baseline	FY2023	Remarks
Energy Utilisation Index (EUI)	100	90	Improved by 10%
GHG Emission (kt CO ₂ e)	NIL	439,454	Peak emission by 2027
Water Efficiency Index (WEI)	25	18	Improved by 28%
Waste Disposal Index (WDI)	0.29	0.27	Improved by 7%

Electrical Consumption

Electricity Consumed (kWh)

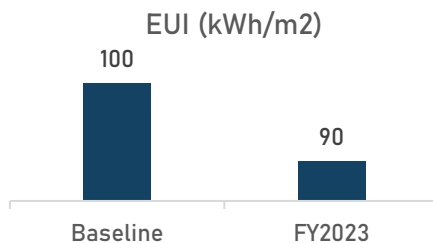
Muis HQ consumed 1,053,847 kWh of electricity in FY2023, which is 9.7% lower than the baseline level (average of 2018-2020 levels).



Energy Utilisation Index (EUI)

EUI is defined as the total electricity consumed by a facility in one year divided by its total gross floor area (GFA). It is calculated only for standard infrastructure and serves as a proxy for energy efficiency.

The EUI for Muis HQ in FY2023 is 90 kWh/m², which is 10% lower than the baseline level.



Remarks

Factors that have contributed to the improvement in EUI include:

During FY2023, Muis staff can telecommute up to two days per week, subject to work exigencies and approval by their reporting officers.

The air-conditioning system in Muis HQ was replaced in 2022 to a more energy-efficient one.

Target

Muis aims to improve EUI for Muis HQ by 10% by 2030 from the baseline level (average of 2018-2020 levels).

Greenhouse Gas Emission

Categories of GHG Emission

Greenhouse gas (GHG) emission can be categorised into Scope 1, 2 and 3 emissions. In this report, only Scope 2 emission is disclosed as Muis does not have any Scope 1 emission and does not have data to account for Scope 3 emission.

Category	Description
Scope 1	Direct emissions occurs from sources that are owned or controlled by the organisation
Scope 2	Indirect emissions that are from the use of purchased electricity, heat and steam.
Scope 3	All other indirect emissions that are a consequence of the activities of the organisation but occur from sources not owned or controlled by the organisation

Scope 2 GHG Emission

Scope 2 emission is calculated by multiplying the electricity consumed by the grid emission factor of that period (refer EMA's website).

Based on a grid emission factor of 0.417, Scope 2 emission for Muis HQ in FY2023 is 439,454 kt CO₂e.

Remarks

Muis is exploring to improve energy efficiency of aircon and lighting systems via smart controls at Muis HQ to reduce GHG emissions.

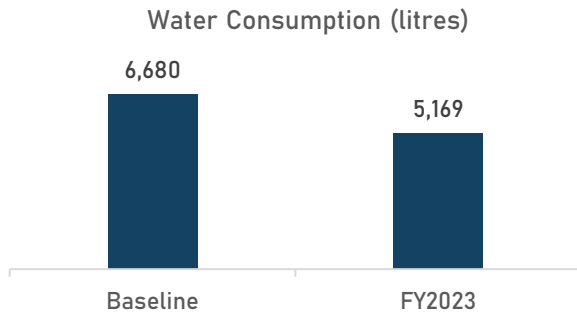
Target

Muis aims to peak carbon emission by 2027 after workplace renovations are completed.

Water Consumption

Water Consumed (litres)

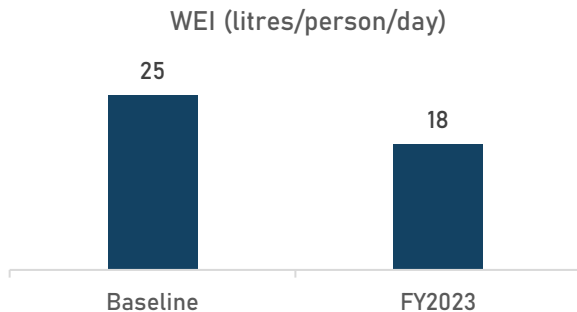
Muis HQ consumed 5,169 litres of water in FY2023, which is 22.6% lower than the baseline level (average of 2018–2020 levels).



Water Efficiency Index

WEI is defined as the water consumption per day divided by the total number of public officer headcount including visitors to the premises. It is calculated only for standard infrastructure.

The WEI for Muis HQ in FY2023 is 18 litres/person/day, which is 28% lower than the baseline level.



Remarks

Factors that have contributed to the improvement in EUI include:

- During FY2023, Muis staff can telecommute up to two days per week, subject to work exigencies and approval by their reporting officers.
- The air-conditioning system in Muis HQ was replaced in 2022 to a more energy-efficient one.

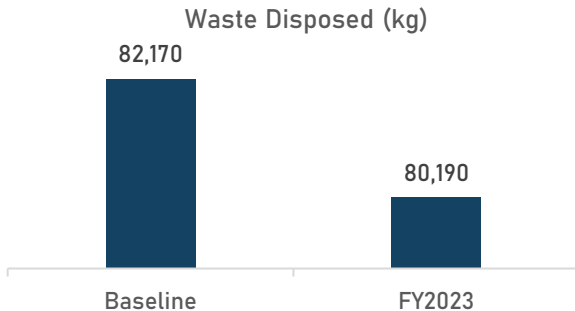
Target

Muis aims to improve WEI for Muis HQ by 10% by 2030 from the baseline level (average of 2018–2020 levels).

Waste Generation

Amount of Disposed (kg)

Muis HQ disposed 80,190 kg of waste in FY2023, which is 2.4% lower than the baseline level (FY2022).



Remarks

Factors that have contributed to the improvement in WDI include:

- Provision of recycling bins
- Digitalisation of work

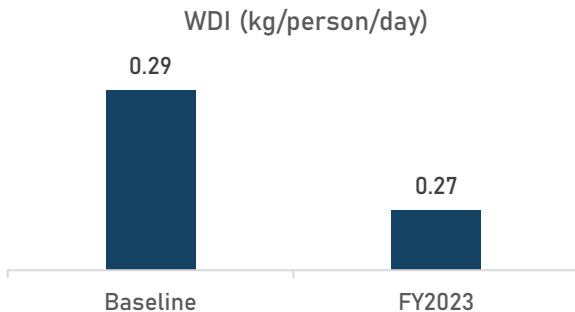
Target

Muis aims to improve WDI for Muis HQ by 30% by 2030 from the baseline level (FY2022).

Waste Disposal Index (WDI)

WDI is defined as the total waste disposed of per day divided by the total number of public officer headcount including visitors to the premises. It is calculated only for standard infrastructure.

The WDI for Muis HQ in FY2023 is 0.27 kg/person/day, which is 7% lower than the baseline level.



SUSTAINABILITY EFFORTS WITHIN MUIS

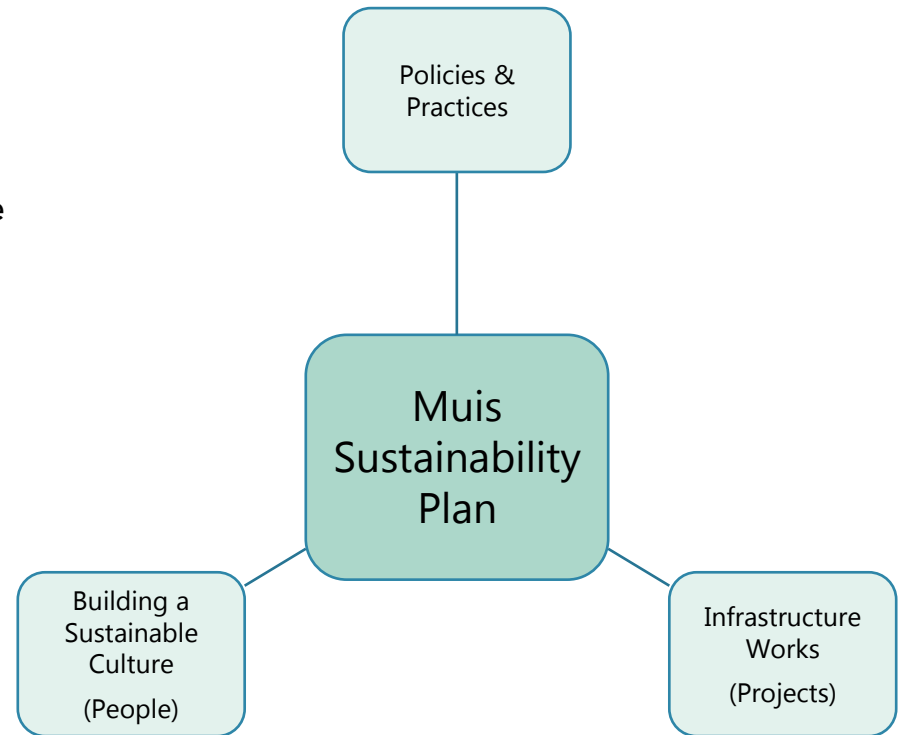
Sustainability Efforts Within Muis

Past Initiatives

Prior to FY2023, there were projects and initiatives by Muis that have contributed to environmental sustainability even though sustainability might not be their primary aim. One of which is the digitalisation of Muis' services that has brought convenience to the community. Work-from-home arrangement due to the COVID-19 pandemic has resulted in the development telecommuting policy during post-pandemic period. This has inadvertently minimised carbon emission due to less travel to work.

Muis Sustainability Plan

As such, Muis Sustainability Plan (MSP) is developed to make environmental sustainability a key objective when it comes to people, projects, policies and practices (4Ps). The sustainability initiatives relating to the 4Ps are then planned and scheduled into a roadmap.



Policies & Practices

Telecommuting Policy

During FY2023, Muis' telecommuting policy allowed officers to telecommute (up to 2 days per week) from home or another space if there is a need to, subject to work exigencies and approval by the officer's reporting officer.

Such work arrangement plays a part in reducing carbon emission as officers need not travel (via transport) to office on those telecommuting days. In addition, telecommuting also helps to reduce the demand for air-conditioning, lighting and water in Muis HQ.

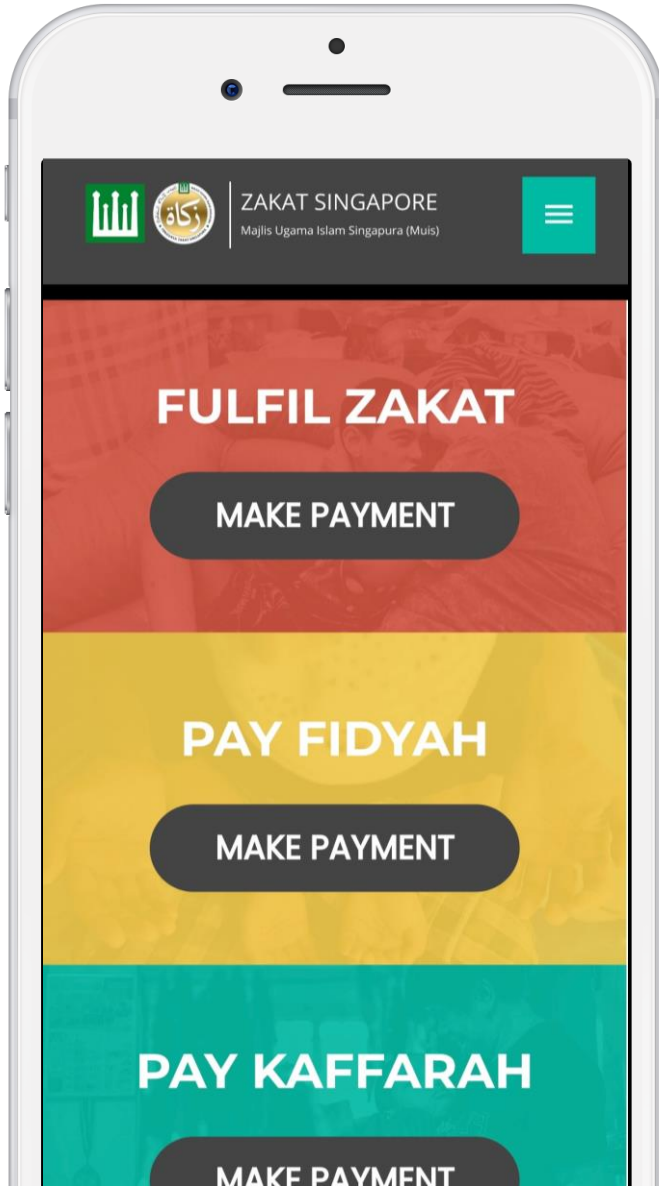
Green Procurement

One of Finance Strategic Unit's role is to ensure that Muis procure common goods and services via the public sector's demand aggregation (DA) contracts. The suppliers that are awarded the DA contracts have done sustainability reporting, met sustainability standards, or are able to provide products with environmental sustainability certification.

Currently, the following nine categories of goods and services can be purchased via DA contracts:

- Accommodation and event venues
- Building design and building products
- Electrical and electronic equipment
- Information and communications technology (ICT) equipment
- Landscaping
- Printing paper
- Public waste collection and cleaning services
- Vehicles
- Water fittings and equipment

Policies & Practices



A screenshot of Zakat.sg website

Digital Platforms for Muis' Services and Contents

Muis has developed digital platforms for the community to access its services and to learn and obtain religious content. Such digital platforms have not only brought convenience to the community, but also help to reduce emission of greenhouse gases as the need to travel to Muis' premises for services, transactions or learning is greatly reduced.

Some of Muis' digital platforms include:

Muis' Function/ Services	Digital Platform
Administration of Zakat and Wakaf	<ul style="list-style-type: none"> Zakat.SG Ourwakaf.SG Muis' website
Construction, development, administration, and management of mosques	<ul style="list-style-type: none"> OurMasjid.SG Mosque Building and Mendaki Fund (MBMF)
Administration of Pilgrimage Affairs (Haj)	<ul style="list-style-type: none"> MyHajSG portal
Administration of Halal Certification	<ul style="list-style-type: none"> Muis' website
Development and administration of Islamic Education and Madrasah	<ul style="list-style-type: none"> LearnIslam.SG OurMadrasah.SG
Issuance of religious guidance to the community	<ul style="list-style-type: none"> Muis' website Muslim.SG app SalamSG TV

Building a Sustainable Culture

Provision of Recycling Bins

Recycling bins are available at Levels 2, 5, 6, 7, 8, 9 and 10 of Muis HQ to encourage recycling of paper, glass, plastic and cans. A recycling bin for electronic waste (e-waste) is provided in the basement of Muis HQ.

Recycling Bins at Muis HQ



Building a Sustainable Culture



Reusable Bags for SalamSG Gives

SalamSG Gives is a meaningful campaign dedicated to distributing food hampers and Ramadan necessities to those in need, embodying the essence of *Salam*, which means peace in Arabic.

In recent years, reusable bags are used for the distribution of items. Switching to reusable bags can drastically reduce the amount of plastic waste generated and help to protect the environment.

Reusable bags being used to distribute *korban* meat during SalamSG Gives

Building a Sustainable Culture

SRC Trail Walks

Trail walks were initially organised by SRC in mid-2023 for a period of 12 weeks as an initiative for Muis officers to stay healthy. The initiative proved to be successful, leading Muis officers to voluntarily organise subsequent trail walks and suggest locations for enjoyable trails.



The locations of the trail walks include:

- Henderson Waves
- Singapore Botanic Gardens
- MacRitchie Reservoir Park
- Kallang River Park Connector
- Hence, other than staying healthy, the trail walks also instill appreciation towards nature and environment.



Building a Sustainable Culture

Environmental Topics During Friday Sermons

Khutbah serves as the primary formal occasion for public preaching in the Islamic tradition. Various topics, including environmental issues, are addressed during weekly Friday sermons (khutbah).

Below are some of the past *khutbah* prepared by Muis that are related to environmental sustainability:

Title of Khutbah	Date
Towards Environmental Sustainability	20 May 2022
Avoiding Wastage is a Sign of Gratitude to Allah	25 Mar 2022
Preserving the Environment	5 Nov 2021
This World is Our Responsibility from Allah	26 Mar 2021
A Mazmumah Trait: Wastefulness	20 Mar 2020
Our Role in Protecting the Environment	29 Aug 2019
Living Prosperously Through Environmental Conservation	8 Mar 2019
Balance in God's Creations	24 Mar 2017



Infrastructure Works

Replacement of Air-conditioning System

The replacement of air-conditioning system at Muis HQ was completed in July 2022. The new variable refrigerant volume (VRV) air-con system has better energy-efficiency rating. VRV is a technology that alternates the refrigerant volume in a system to match a building's precise requirements. Less energy is required to maintain set air-con temperatures.

New air-con compressors located installed at Muis HQ rooftop



Infrastructure Works



Self-closing Basin Taps for Toilets

The wash basins in Muis HQ toilets are equipped with self-closing basin taps, which are the most effective in terms of water-saving compared to other typical types of faucets. These taps have a pre-set shut-off mechanism that activates only a few seconds after being turned on, resulting in significantly reduced water consumption.

Motion Sensor Lights in Toilets

The toilets in Muis HQ are fitted with motion sensor lights to conserve electricity when the toilets are unoccupied. The lights are programmed to automatically switch off if no motion is detected at the basin area for 15 minutes.

Provision of Bicycle Parking Lots

Bicycle parking lots are provided to encourage staff and visitors to cycle to Singapore Islamic Hub (SIH). There is also a designated parking area outside SIH for Anywheel bicycle users.

Toilets in Muis HQ are equipped with self-closing basin taps



Caption	Bicycle parking area at Singapore Islamic Hub
For sub-header	Provision of Bicycle Parking Lots



Caption	
For sub-header	Provision of Bicycle Parking Lots

END

THANK YOU